

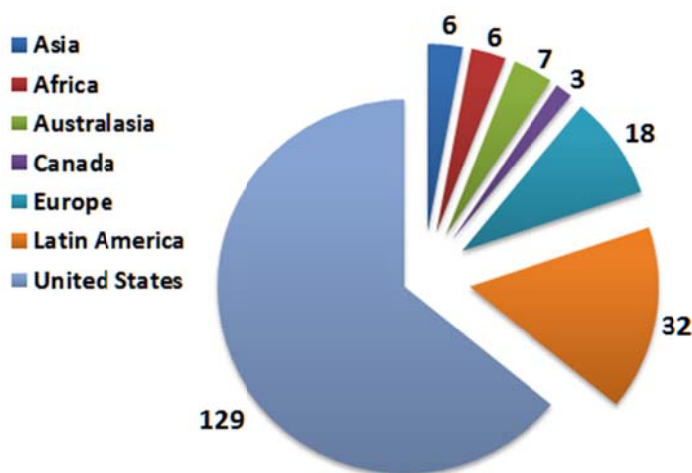
Metropolitan Community Churches (MCC)

February 2015

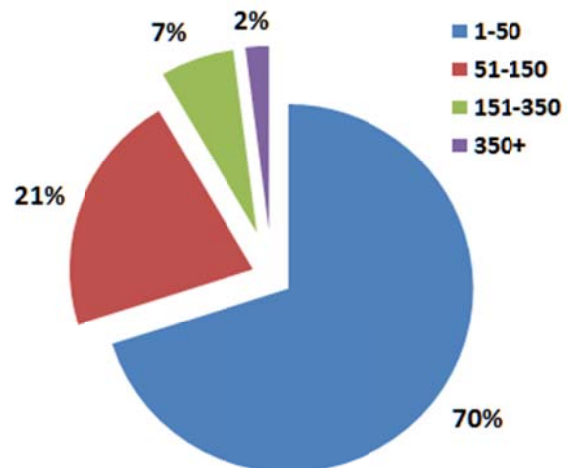
Philosophy: the structure of MCC denomination mirrors the structure of the local MCC program size congregations (150-350 in average worship attendance)

Global Distribution of MCC Churches

of Churches Worldwide (201)



Average Weekly Attendance



****As of January 2015

Authority: Ultimate authority resides in General Conference - the clergy delegates & lay delegates of affiliated MCC congregations

Next level: Two separate bodies/functions **are elected** and empowered by General Conference:

UFMCC Bylaws - <http://mccchurch.org/how-we-work/governance/>

UFMCC Bylaws- Article V.E. 2 - **Moderator**
(<http://mccchurch.org/overview/moderators-corner/>) and

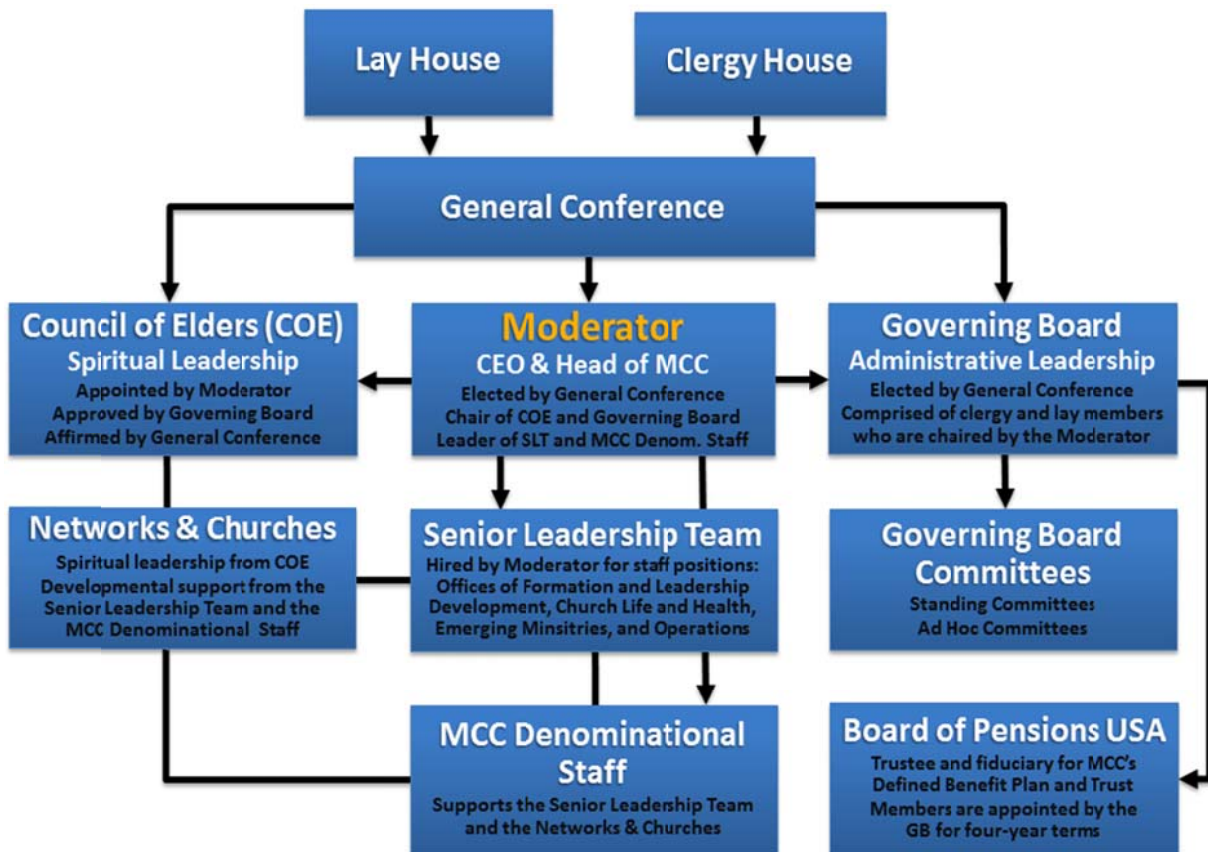
UFMCC Bylaws – Article V.E.4 - **Governing Board**
(<http://governingboard.mccchurch.org/about/board-members/>)

The Moderator **appoints** Elder(s) to the Council of Elders; the Governing Board **approves**, and the General Conference **affirms**.

UFMCC Bylaws – Article V.E. 3 - **Council of Elders:** <http://mccchurch.org/how-we-work/board-of-elders/>

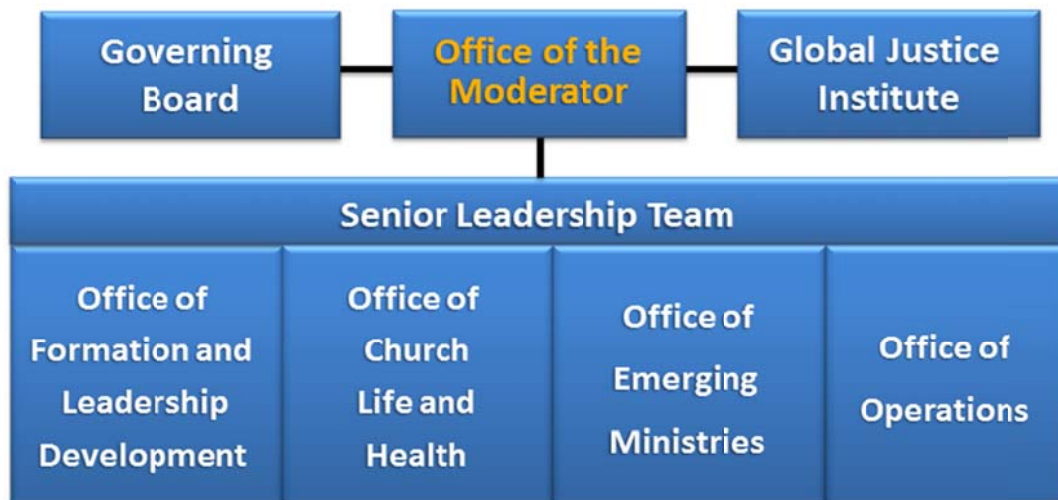
Recently appointed Elders pending General Conference affirmation on May 6-7, 2015: <http://mccchurch.org/introducing-elder-appointees-to-the-general-conference-of-metropolitan-community-churches/>

MCC Denominational Structure



Moderator flowchart: Director of Operations; Director of Office of Emerging Ministries; Director of Office of Formation and Leadership Development; Director of Office of Church Life and Health

MCC Policy and Programming Interlocks



Governing Board: Standing Committees (Governance, Communications, Development, Finance) & Ad Hoc Committees (Audit, Assessments, Moderator Nominating Committee, Governing Board Nominating Committee, Bylaw Team)

Statement of Faith Commission: General Conference 2013 gave authority to the Governing Board to approve this task force. <http://mccchurch.org/commission-on-the-mcc-statement-of-faith/>

There are several advisory Councils: <http://mccchurch.org/how-we-work/boards-teams/>